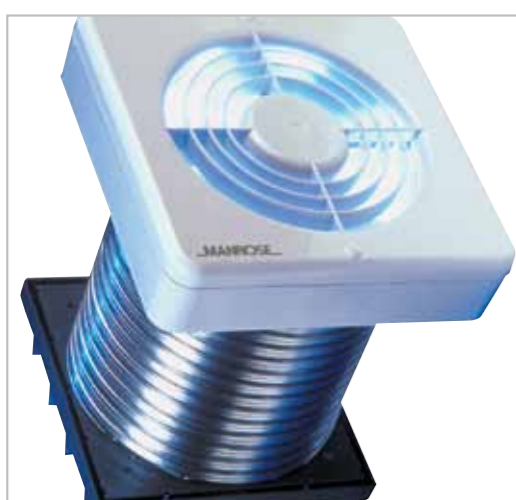


# 150mm (6") Fan Range

XF150B / XP150B / WF150B



- Designed for wall, ceiling or window mounting, the efficient and easy to install range of 150mm (6") extractor fans are available in ten options, and are an alternative style and design to the traditional 6" kitchen style.
- The fans are suited to larger bathrooms, utility rooms, shops, offices, restaurants, etc. Power is provided by a single phase induction motor with pre-oiled bearings for a long, maintenance-free life.
- The extract rate for the 150B Series is 230m<sup>3</sup>/hr, 64 litres per second.
- Incorporating the latest technology and design, Manrose can now offer a complete family of 100mm (4"), 120mm (5") and 150mm (6") fans, all with the same styling.
- The units are all manufactured using high gloss ABS thermoplastics for strength, durability, aesthetics and easy cleaning.
- Designed to comply with the 2006 Building Regulations on Ventilation (F1).

## Technical Details

Cat. No.	Product type
<b>XF150BS</b> <b>XP150BS</b>	Standard model for remote switching
<b>XF150BP</b> <b>XP150BP</b>	As above supplied with pullcord switch
<b>XF150BT</b> <b>XP150BT</b>	Timer model incorporating integral adjustable electronic timer (1-20 mins)
<b>XF150BTP</b> <b>XP150BTP</b>	As above but with pullcord override switch. Requires no switched live
<b>XF150BH</b> <b>XP150BH</b>	Humidity control which is adjustable between 40% RH and 95% RH
<b>XF150BHP</b> <b>XP150BHP</b>	As above but with pullcord override switch. Requires no switched live
<b>XF150BPIR</b> <b>XP150BPIR</b>	PIR activated model with adjustable timer with presence detection, timer runs on when the room is vacated.
<b>XF150BMH</b>	Electro-Mechanical Humidity Control with on/off switch adjustable 20 - 90% RH
<b>XF150BMHP</b>	As above with pullcord switch and neon light
<b>XF150BMHT</b>	As XF150MH but with electronic timer 150mm 6" Window Fans
<b>WF150BP</b>	Pullcord switch
<b>WF150BT</b>	Electronic timer with pullcord override switch and neon light
<b>WF150BH</b>	Humidity control which is adjustable between 40% RH and 95% RH Complete with integral adjustable timer (1-20 mins).
<b>WF150BPIR</b>	PIR activated model with timer and presence detection, timer runs on when the room is vacated. There is no need to connect to a separate switch Timer adjustable between 1-20 mins. Requires no switched live

**Packaging**  
XF150B Series in outers of 10 measuring 595mm x 245mm x 450mm - weight 11kgs  
XF150BMH Series in outers of 10. For packaging dimensions, contact our technical department  
WF150B Series in outers of 10 measuring 460mm x 640mm x 240mm - weight 17kgs  
XP150B Series in outers of 10 measuring 1070mm x 263mm x 428mm - weight 21kgs

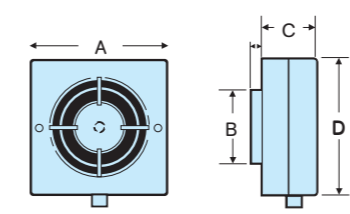
**Installation**  
XF150B Series designed for wall or ceiling mounting (pullcord wall-mounting only). Wall fixing kit is available separately The SVK (1280).  
XP150B Series. These fans are designed for through wall fixing. Complete with aluminium flexible ducting and a wall grille.  
WF150B Series. These fans are designed to be fitted in either a window or wall through a standard 184mm (7 1/4") hole. A wall fixing kit FK1 (1300) is available which comprises of wall plugs, screws and a 400mm length of 6" diameter aluminium flexible ducting (when fully extended).

**Electrical**  
220-240V - AC. 50Hz  $\square$  Single phase consuming 17 watts. These fans are double insulated and do not require an earth. All wiring must comply with current IEE regulations. A double pole isolating switch, having a contact separation of at least 3mm in all poles, must be used with a 3 amp fuse fitted. The fan should not be accessible to a person using either the shower or the bath and mounted a minimum of 1.8 metres from the floor.

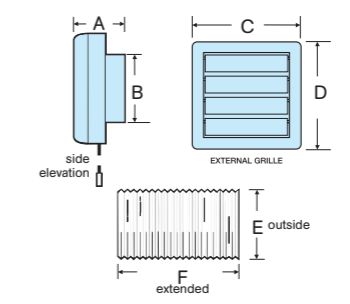
### Dimensions (mm)

PRODUCT	A	B	C	D	E	F
<b>XF150B</b>	203	203	95	150Ø		
<b>XF150MHB</b>	203	150Ø	72	203		
<b>XP150B</b>	95	150Ø	180	180	160Ø	400
<b>WF150B</b>	203	203	4-10	95	23	

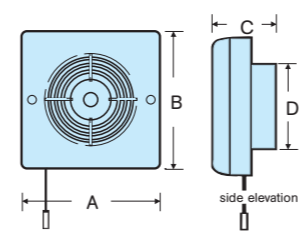
### Dimensions XF150BMH Series



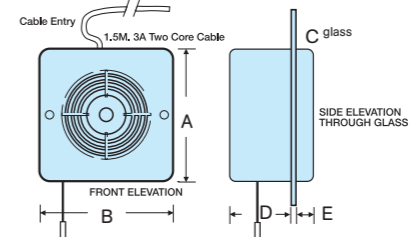
### Dimensions XP150B Series



### Dimensions XF150B Series



### Dimensions WF150B Series



**Additional Data**  
150mm (6") Range  
Maximum pressure: 50 p.a.  
Fan speed: 2400 r.p.m.  
Sound volume: 40.0 dB(A)  
Maximum operating temperature: 40°C

**Performance Graph**  
XF/WF/XP150B Series 230m<sup>3</sup>/hr, 64 litres per second

